

Murals of Downtown West Jefferson

1. GARDENS OF THE SEA

by Raney Rogers, June 2002

Sponsored by Raney Rogers

Located at Acorn Gallery

2. UNITY IN DIVERSITY

by Mary Ann DiNapoli-Mylet and
Ashe County Middle School Students, July 2006

Sponsored by Ashe County Arts Council

Located at Geno's Restaurant

3. BLUE RIDGE PARKWAY

by Bessie Clay, October 2005

Sponsored by Jefferson Station

Located at Jefferson Station

4. TRAIN AT JEFFERSON STATION

by Stephen Shoemaker, May 2005

Sponsored by Jefferson Station

Located at Jefferson Station

5. SPRING WILDFLOWERS ON

MOUNT JEFFERSON

by Robert Johnson, June 1998

Sponsored by Ashe County Arts Council &
West Jefferson Revitalization Committee

Located at AF Bank

6. WEATHERED PINES

by R. T. Morgan, July 2003

Sponsored by Vivian Miller

Located at Ashe High Country Realty

7. HISTORY OF ASHE THROUGH THE AGES AND SEASONS

by Jack Young, October 1996

Sponsored by McFarland &
Company, Publishers, Inc.

Located at Regency Properties

8. WINGS AND THINGS

by Earle & Raines Thompson with the help
of community volunteers, March 2004

Sponsored by Ashe County Arts Council,
North Carolina Museum of Art and
Ashe County High School

Located at Ashe County Cheese

9. NEW RIVER TRADITIONS

by Mary Ann DiNapoli-Mylet, October 1998

Sponsored by Ashe County Arts Council
and West Jefferson Revitalization Committee

Located at Active Realty

10. HAYDEN AND CHACO

by Olivia Harless and Stephen Shoemaker, August 2004

Sponsored by Western Jefferson

Located at Western Jefferson

11. SOMEWHERE IN ASHE

by R. T. Morgan, June 2002

Sponsored by West Jefferson
Revitalization Committee

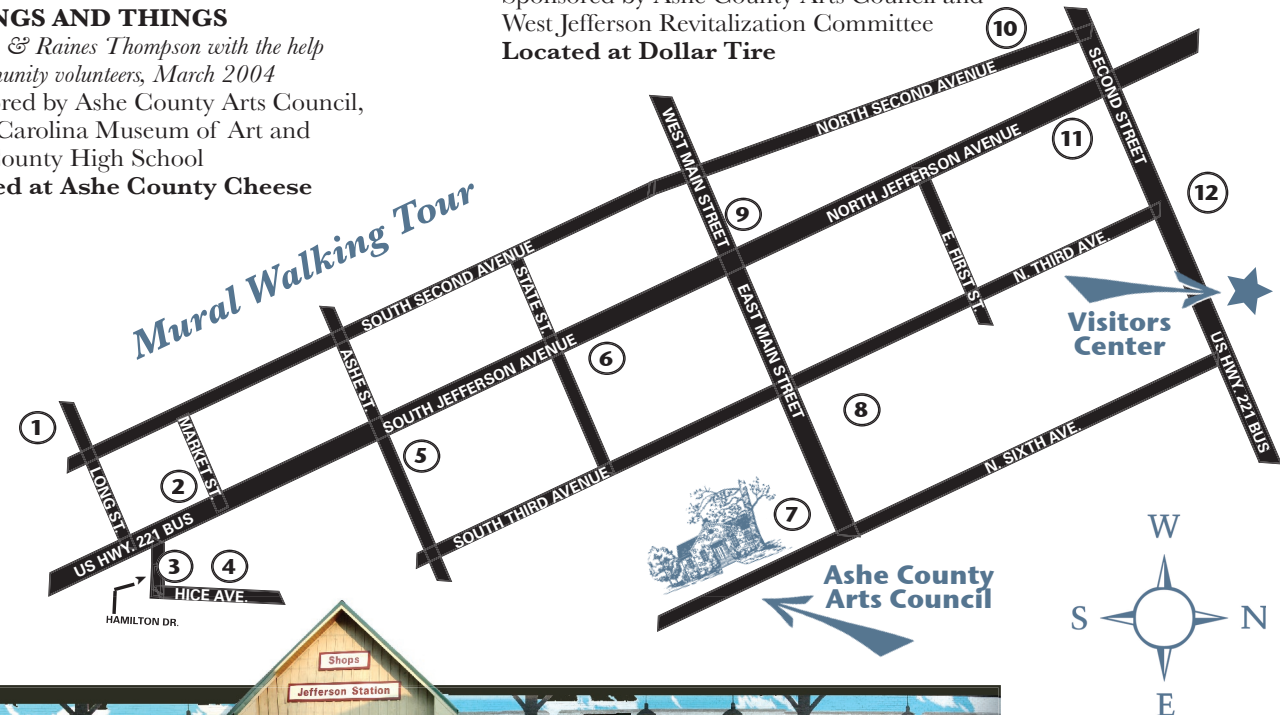
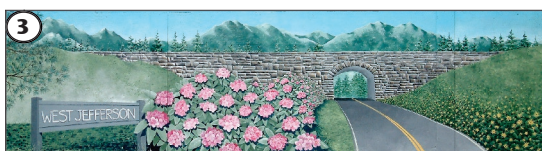
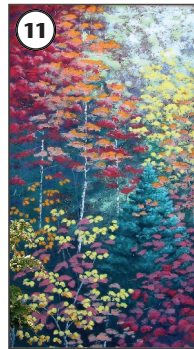
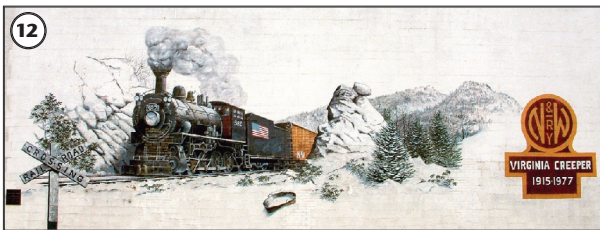
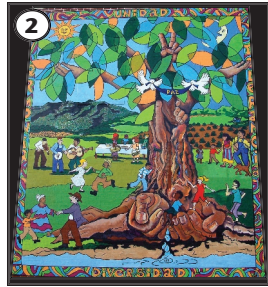
Located at R.T. Morgan Art Gallery

12. CUT AT DEVIL'S STAIRS

by Stephen Shoemaker, June 2001

Sponsored by Ashe County Arts Council and
West Jefferson Revitalization Committee

Located at Dollar Tire

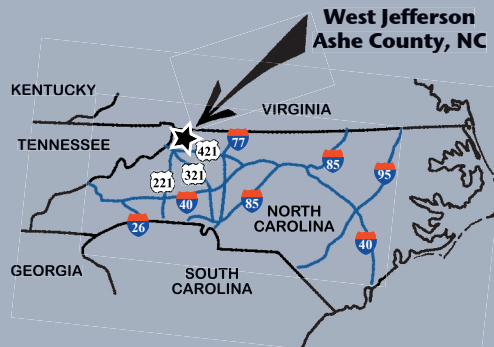


How to Get to West Jefferson, NC!

From Charlotte, NC: Take I-77 North. Take Exit 73-B (US Hwy. 421 North). Turn right at Deep Gap onto US Hwy. 221 North and then left onto Business US Hwy. 221. Proceed to downtown.

From Raleigh/Greensboro, NC: Take I-40 to US Hwy. 421 North. Turn right at Deep Gap onto US Hwy. 221 North. Turn left onto Business Hwy. 221. Proceed to downtown.

From Roanoke, VA: Take I-81 South to the exit for I-77 South. Take exit for US Hwy. 421 North and turn right at Deep Gap onto US Hwy. 221 North. Turn left onto Business US Hwy. 221. Proceed to downtown.



MURALS

of Downtown West Jefferson

Capturing the Beauty and History of our Town



ASHE
Arts
ASHE COUNTY ARTS COUNCIL

The Painting is on the Wall

Welcome to West Jefferson's **ARTS DISTRICT**! The downtown murals are one facet of this small rural town's personality. The mural project began in 1996; today West Jefferson sports twelve beautiful, intriguing, unique works of public art that showcase the history, culture and beauty of the mountain region.

The murals offer a glimpse into Ashe County life. They provide the viewer with an appreciation for the community—past and present. The murals add life to the downtown area and nurture a sense of renewal and civic pride.

For residents and visitors, the murals give a glimpse of the artistic talent that abounds in Ashe County. Contributing painters include West Jefferson, Ashe County and North Carolina artists, local students, and community members. The enthusiasm and the overwhelming support from the community have contributed to the mural project's success.

The Murals of West Jefferson have been created and funded by a variety of sources. The Ashe Arts Center serves as the hub of information for the arts in Ashe County and the Arts Council has long taken the lead role in using the arts as a vehicle for change and growth throughout the county. Funding partners in the West Jefferson

Downtown Murals Project include HandMade in America, the Blue Ridge National Heritage Area, the North Carolina Arts Council, the North Carolina Museum of Art, the West Jefferson Revitalization

Committee / West Jefferson Community Partnership, Ashe County Schools, local businesses, the Town of West Jefferson and the Ashe County Arts Council.

The murals map is designed to guide you on an easy walking tour encompassing eight town blocks. Stroll the streets of West Jefferson and enjoy galleries, studios, shops, services, restaurants and interesting public art. The murals and public art have the power to beautify, enhance, inspire and to contribute to our living and working environment.

We hope you enjoy your stay in West Jefferson, and encourage you to come back soon. More murals and public art are planned and there's always something special going on in the area. And please tell your friends about West Jefferson's ARTS DISTRICT and the Town of the Murals!



For more information about arts programming, events or the murals in West Jefferson, call the Ashe County Arts Council at 336-846-ARTS.

North Carolina
arts
Council

HANDMADE
in
AMERICA

BLUERIDGE
NATIONAL HERITAGE AREA

TOWN OF
WEST JEFFERSON
N.C.
SINCE 1915

ASHE
Arts
ASHE COUNTY ARTS COUNCIL
303 School Avenue • West Jefferson, NC
336.846.ARTS
www.ashecountyarts.org